

APPROVAL SHEET

客户名称:

CUSTOMER 凯晨电子

品名:

PART NO **ELECTROLYTIC CAPACITOR**

型号规格:

TYPE **CD81 系列**

日期:

DATE 2008. 12. 09

	“√”	CUSTOMER'S SIGNATURE	NOTE
FULL APPROVED			
CONDITIONAL APPROVED			
REJECTED			

Acon 深圳中元电子有限公司

SHENZHEN ZHONG YUAN ELECTRONICS CO.LTD.

地址:广东深圳市布吉罗岗工业区中元路 15 号

电话: 0755-28881229

传真: 0755-28883252

CD81 105°C Series

Features特点

- ◆ Wide CV value range. CV值范围宽。
- ◆ Load Life 2000 hours at 105°C. 105°C负荷寿命达2000小时。
- ◆ Safety vent construction design. 安全防爆阀设计。

Specifications技术要求

Item项目	Performance Characteristics特性								
Operating Temperature Range 使用温度范围	-40~+105°C				-25~+105°C				
Rated Voltage Range 额定电压范围	6.3~100VDC				160~450VDC				
Capacitance Range 电容容量范围	0.1~15000 μF				0.47~220 μF				
Capacitance Tolerance 电容容量允差	±20% (120Hz, +20°C)								
Leakage Current 漏电流 (+20°C, 最大)	I ≤ 0.01CV 或 3 (μA) After 1 minute, whichever is greater measured with rated working voltage applied 额定工作电压充电1分钟后读数, 取大者				I ≤ 0.03CV (μA) After 1 minute, whichever is greater measured with rated working voltage applied 额定工作电压充电1分钟后读数, 取大者				
Dissipation Factor 损耗角正切值 (tg δ)	Working Voltage 工作电压 (VDC)	6.3	10	16	25	35	50	63	100
	D. F (%) max最大	24	22	20	15	12	10	10	8
	Working Voltage 工作电压 (VDC)	160	200	250	350	400	450		
	D. F (%) max最大	16	16	16	20	20	20		
For capacitance > 1000 μF, Add 2% per another 1000 μF 容量 > 1000 μF 时, 每增加 1000 μF D. F. 值增加 2% (120Hz, +20°C)									
Low Temperature Characteristics 低温特性 (120Hz)	Impedance ratio, max 阻抗比, 最大								
	Working Voltage 工作电压 (VDC)	6.3	10	16	25	35	50	63	100
	Z - 25°C / Z+20°C	4	3	2	2	2	2	2	2
	Z - 40°C / Z+20°C	8	6	4	3	3	3	3	3
	Working Voltage 工作电压 (VDC)	160	200	250	350	400	450		
Z - 25°C / Z+20°C	2	2	3	5	6	15			
For capacitance > 1000 μF, Add 0.5% per another 1000 μF for Z - 25°C / Z+20°C, Add 1% per another 1000 μF for Z - 40°C / Z+20°C. 容量 > 1000 μF 时, 每增加 1000 μF, Z-25°C / Z+20°C 值增加 0.5%, Z-40°C / Z+20°C 值增加 1%									
Load Life 负荷寿命	Test conditions 试验条件 Duration time 持续时间: 2000h Ambient temperature 环境温度: +105°C Applied voltage: Rated Working Voltage 施加电压: 额定工作电压 (VDC) After test requirements: Resumed 16 hours at normal temperature 试验后要求: 室温下恢复 16 小时, +20°C 测试 Capacitance change: ≤ ±20% of the initial measured value 电容容量变化: ≤ ±20% 初始值 Dissipation Factor: ≤ 200% of the initial specified value 损耗角正切值: ≤ 200% 规定值 Leakage Current: ≤ The initial specified value 漏电流: ≤ 规定值								
Shelf Life 储存寿命	Test conditions 试验条件 Duration time 持续时间: 1000h Ambient temperature 环境温度: +105°C Applied voltage: None 施加电压: 无 After test requirements: Resumed 16 hours at normal temperature 试验后要求: 室温下恢复 16 小时, +20°C 测试 Same limits as Load Life 与负荷寿命的要求相同								

Multiplier for Ripple Current vs. Frequency

纹波电流频率调整系数

CAP 容量 (μF) / Hz		60 (50)	120	400	1K	10K	50K~100K
Multiplier 系数	<10	0.8	1	1.30	1.30	1.65	1.70
	10~100	0.8	1	1.23	1.23	1.48	1.53
	100~1000	0.8	1	1.16	1.16	1.35	1.38

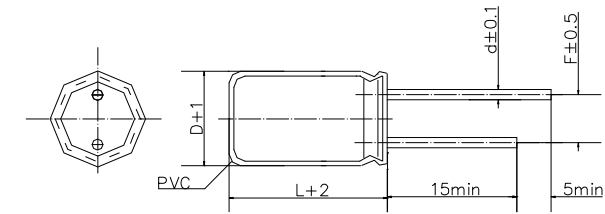
Multiplier for Ripple Current vs. Temperature

纹波电流温度调整系数

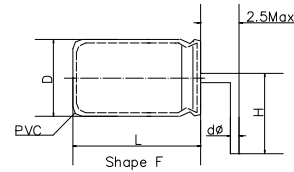
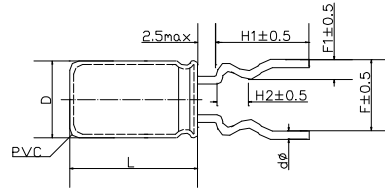
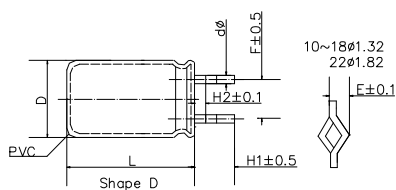
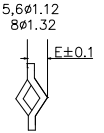
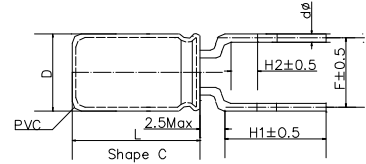
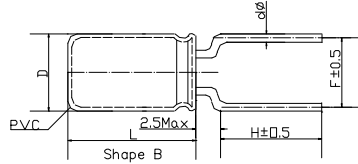
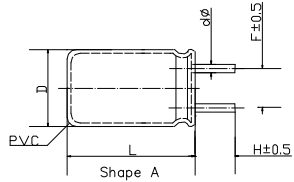
Temperature 温度 °C	45	60	70	85	105
Multiplier 系数	2.10	1.90	1.40	1.25	1.00

15000	1763	--	-	-	-	-	-	-	-	-	-	-	-	-
-------	------	----	---	---	---	---	---	---	---	---	---	---	---	---

3. Cutting and Forming切脚成型



DΦ	4	5	6	8	10	13	16	18	22	25
F	1.5	2.0	2.5	3.5	5.0	5.0	7.5	7.5	10	12.5
dΦ	0.45	0.5	0.5	0.5	0.6	0.6	0.8	0.8	0.8	0.8

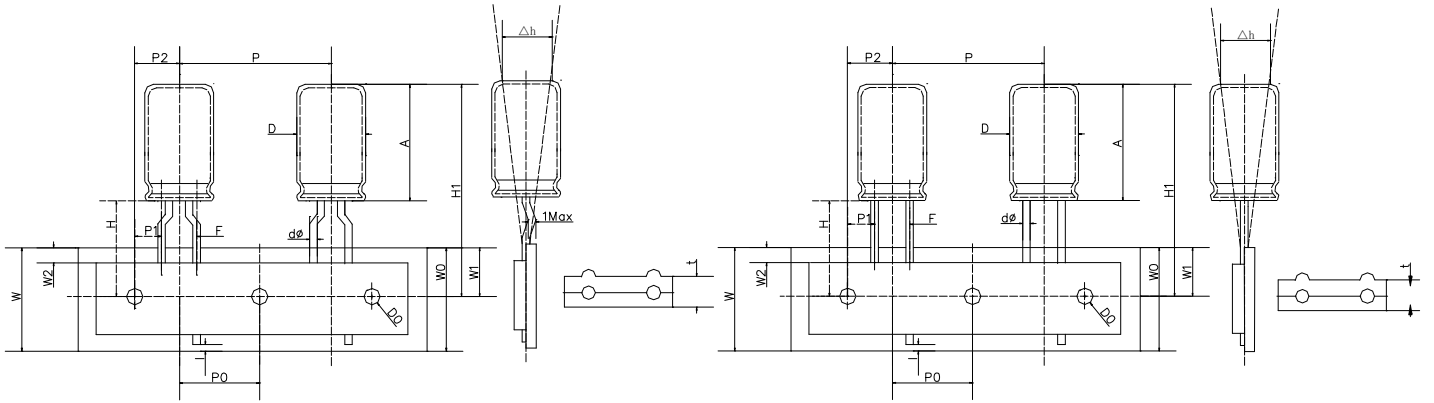


Specifications技术要求

Shape No. 形状	Cutting & Forming Methods 切脚成型方式	DΦ	4	5	6	8	10	13	16	18	22	25
A	Lead Cutting Only 只切脚	F	1.5	2.0	2.5	3.5	5.0	5.0	7.5	7.5	10	12.5
		H	4	4	4	4	5	5	5	5	5	5
		d	0.45	0.5	0.5	0.5	0.6	0.6	0.8	0.8	0.8	0.8
B	Lead Cutting and Forming 切脚成型	F	5	5	5	5	-	-	-	-	-	-
		H	4	4	4	4	-	-	-	-	-	-
		d	0.45	0.5	0.5	0.5	-	-	-	-	-	-
C	Lead Cutting ,Crimping and Forming 切脚弯曲成型	F	5	5	5	5	-	-	-	-	-	-
		H1	4	4	4	4	-	-	-	-	-	-
		H2	1.8	1.8	1.8	1.8	-	-	-	-	-	-
		d	0.45	0.5	0.5	0.5	-	-	-	-	-	-
D	Lead Cutting and Crimping 弯曲切脚	F	-	-	-	-	5.0	5.0	7.5	7.5	10	12.5
		H1	-	-	-	-	4.5	4.5	4.5	4.5	4.5	4.5
		H2	-	-	-	-	1.8	1.8	1.8	1.8	1.8	1.8
		d	-	-	-	-	0.6	0.6	0.8	0.8	0.8	0.8
E	Lead Cutting and Forming 切脚成型	F	5	5	5	5	-	-	-	-	-	-
		F1	1.2	1.2	1.2	1.2	-	-	-	-	-	-
		H1	4	4	4	4	-	-	-	-	-	-
		H2	1.8	1.8	1.8	1.8	-	-	-	-	-	-
		d	0.45	0.5	0.5	0.5	-	-	-	-	-	-
F	Lead Cutting and Bending	F	1.5	2.0	2.5	3.5	-	-	-	-	-	-

	折弯切脚	H	6	7	9	9	-	-	-	-	-	-
		d	0.45	0.5	0.5	0.5	-	-	-	-	-	-

4. Taping 编带



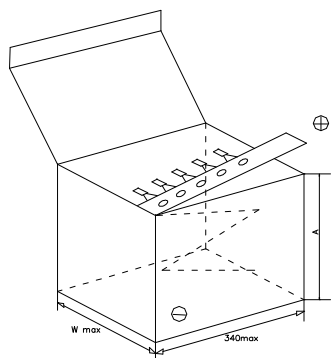
Specifications 技术要求

Code 代号	D	A	d	P	P0	P1	P2	F	W	W0	W1	W2	H	H0	D0	I	t	Δh	
Tol. 公差	±0.5	±1.5	±0.05	±1.0	±0.2	±0.7	±1.3	+0.8 -0.2	±0.5	Min (mm)	±0.5	Max	±0.75	±0.5	±0.2	Max	±0.2	Max	Fig
Item 参数	4.0	7.0	0.45	12.7	12.7	3.85	6.35	2.5 5.0	18	10	9.0	0.2~0.6	18.5	16.0	4.1	1.0	0.7	1.0	1
	5.0	12.5	0.5	12.7	12.7	3.85	6.35	2.5 5.0	18	10	9.0	0.2~0.6	18.5	16.0	4.1	1.0	0.7	1.0	
	6.3	12.5	0.5	12.7	12.7	5.1	6.35	2.5 5.0	18	10	9.0	0.2~0.6	18.5	-	4.1	1.0	0.7	1.0	2
	8	12.5	0.5	12.7	12.7	4.6	6.35	3.5	18	12	9.0	0.2~0.6	18.5	-	4.1	1.0	0.7	1.0	
	10	21.0	0.6	12.7	12.7	3.85	6.35	5.0	18	12	9.0	0.2~0.6	18.5	-	4.1	1.0	0.7	1.0	
	13	26.0	0.6	15.0	15.0	5.0	7.5	5.0	18	12	9.0	0.2~0.6	18.5	-	4.1	1.0	0.7	1.3	
16	31.5	0.8	25.4	25.4	8.95	12.7	7.5	18	12	9.0	0.2~0.6	18.5	-	4.1	1.0	0.7	1.3		

Package Information 包装

Case Diameter (DΦ mm) 直径	Ammo Package 折叠式			Reel Package 盘卷式	
	A	W	Q' ty Pcs	W	Q' ty Pcs
4	218	50	2500	44	1800
5	285	50	2000	44	1300
6	285	50	1500	44	1000
8	240	50	800	44	800
10	300	55	500	44	600
13	285	62	300	-	-

Ammo Package 折叠式



Reel Package 盘卷式

